

INSTRUMENT APPROACH - ICAO

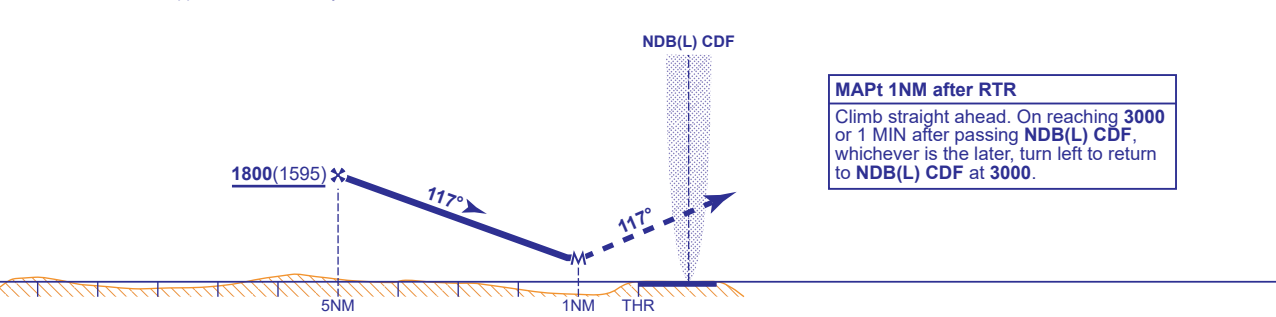
CARDIFF SRA RTR 2NM RWY 12 (ACFT CAT A,B,C,D)

		APP 119.155, 125.855	CARDIFF APPROACH	AD ELEVATION 220	SRA RTR 2NM RWY 12 (ACFT CAT A,B,C,D)
MSA 25NM NDB(L) CDF	MSA 10NM NDB(L) CDF	TWR 133.105	CARDIFF TOWER	THR ELEVATION 205	
		RAD 125.855	CARDIFF RADAR	OBSTACLE ELEVATION 1299 AMSL (1094) (ABOVE THR)	
		119.155 (LARS)			
		ATIS 132.480	CARDIFF INFORMATION	BEARINGS ARE MAGNETIC	TRANSITION ALTITUDE 6000



RADAR ADVISORY HEIGHTS Gradient 5.2%, 320FT/NM				
NM	5.0	4.0	3.0	2.0
ALT(HGT)	1800(1595)	1480(1275)	1160(955)	840(635)

Initial and intermediate approach as directed by radar.



**MAPt 1NM after RTR**  
Climb straight ahead. On reaching 3000 or 1 MIN after passing NDB(L) CDF, whichever is the later, turn left to return to NDB(L) CDF at 3000.

Aircraft Category		A	B	C	D	Rate of descent	G/S KT	160	140	120	100	80
OCA (OCH)	Procedure	770(565)	770(565)	770(565)	770(565)		FT/MIN	850	740	640	530	430
VM(C)OCA (OCH AAL)	Total Area	680(460)	820(600)	1560(1340)	1690(1470)	RTR to MAPT	MIN:SEC	0:22	0:25	0:30	0:36	0:45
	SW of RWY 12/30	680(460)	820(600)	920(700)	920(700)							

**NOTE** Radar Ranges measured to touchdown.

CHANGE (8/21): APP, TWR, RAD FREQUENCIES REVISED.